

THE PROPOSAL:

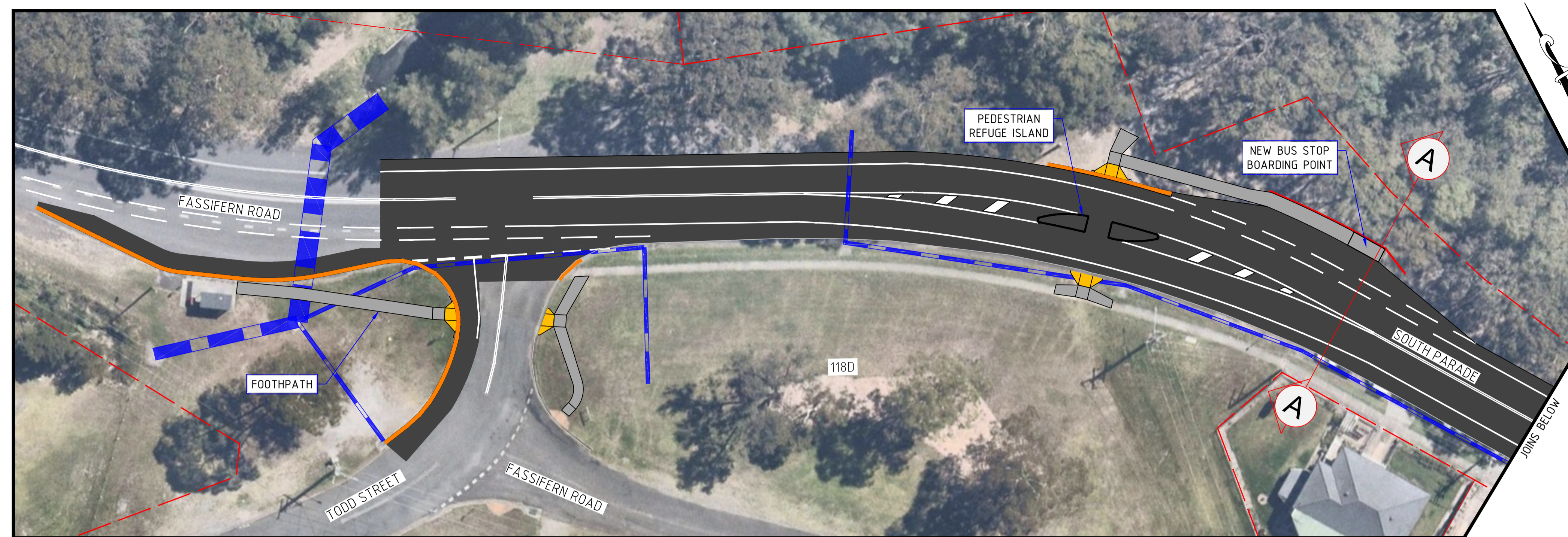
- ENHANCE ACCESSIBILITY, SAFETY AND FUNCTIONALITY OF THE ROAD.
- IMPROVE THE ROAD PAVEMENT BY REHABILITATING AND RECONSTRUCTING THE ROAD AND KERB AND CHANNEL.
- IMPROVE SURFACE STORMWATER RUNOFF BY IMPROVING THE GRADE AND CROSS-FALL OF ROAD SURFACE.
- IMPROVE ROAD SAFETY BY PROVIDING LINE-MARKING.
- IMPROVE PEDESTRIAN SAFETY AND CONNECTIVITY BY CONSTRUCTION OF KERB RAMPS, CONCRETE FOOTPATHS AND PEDESTRIAN REFUGE ISLANDS.
- DECREASE MAINTENANCE COSTS ALONG THE STREET.

THE PROJECT INCLUDES:

- FULL ROAD RECONSTRUCTION EXCLUDING KERB AND CHANNEL REPLACEMENT.
- UPGRADE PEDESTRIAN REFUGE ISLANDS AND BUS STOP BOARDING POINT.
- IMPROVING THE GRADE AND CROSS-FALL OF ROAD PROFILE.
- CONSTRUCTION OF KERB RAMPS AND FOOTPATH.
- RE-TURFING ANY AREAS OF THE NATURE STRIP DISTURBED BY CONSTRUCTION ACTIVITIES.

NOTES

1. LAKE MACQUARIE DEVELOPMENT CONTROL PLAN 2014 AND ROADWAY STANDARD DRAWINGS CAN BE FOUND ONLINE AT WWW.LAKEMAC.COM.AU
2. ALL DIMENSIONS ON THIS SKETCH PLAN ARE NOT TO SCALE AND PREPARED FOR INFORMATION PURPOSE ONLY.
3. ALL DETAILS SHOWN ON THE PLAN MAY BE SUBJECT TO CHANGE.

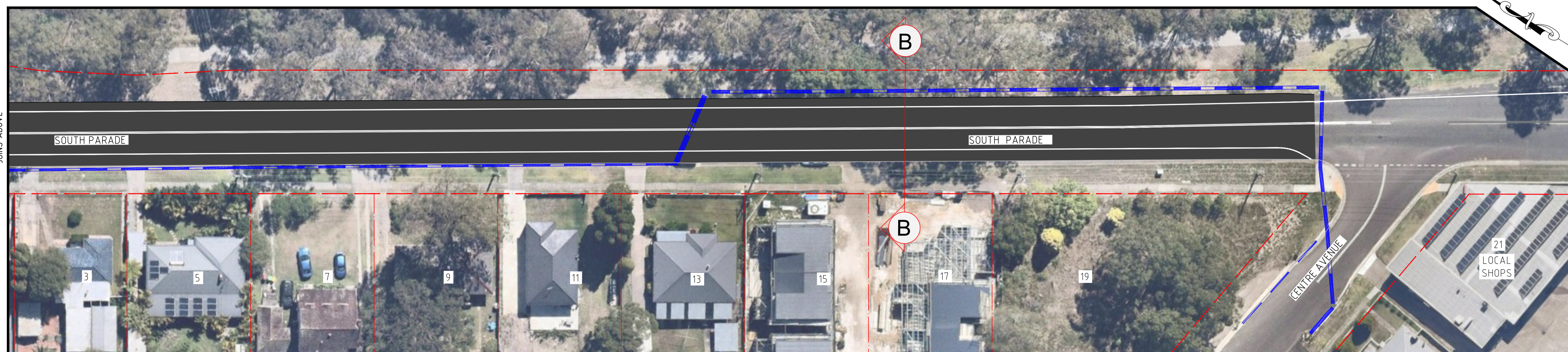
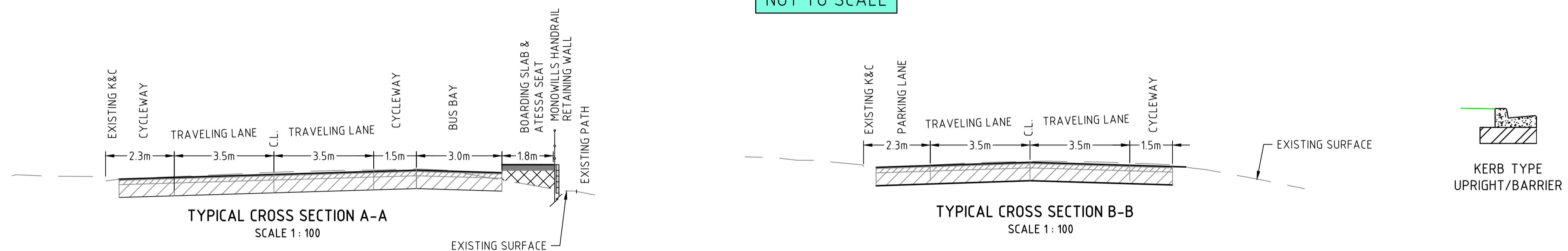


SITE PLAN

NOT TO SCALE

LEGEND

PROPOSED KERB AND CHANNEL	
GIVE WAY LINE	
PROPERTY BOUNDARY	
EXISTING DRAINAGE	
ROAD RECONSTRUCTION	
CONCRETE FOOTPATH	
KERB RAMP	
HOUSE NUMBER	



SITE PLAN

NOT TO SCALE