



Revealed (Whirring) Tree Frog – *Litoria revelata*

Conservation concern

Inhabits ponds in wet forests with with rainforest understorey, wet sclerophyll forest, and deeper gullies in moist situations. Requires still ephemeral and permanent, ponds for breeding in association with *Gahnia* and *Carex* species. Occurs in the wet forested areas on the in west Lake Macquarie City from low to high altitude.

Photo: Stephen Mahony

ECO FACTS

Species of concern in Lake Macquarie

Amphibians



Bibrons Toadlet – *Pseudophryne bibronii*

Regionally Significant

Occurs in wet sclerophyll and Swamp Mahogany there are a high number of records in dry sclerophyll Forest with *Banksia* understorey in the Lake Macquarie City. Breeds in ephemeral, annually flooded areas that fill up with autumn and winter rain. Requires rocks, logs and leaf litter and is dependent on groundwater.

Photo: Stephen Mahony



Giant Barred Frog – *Mixophyes iteratus*

EPBC and TSC Act Endangered

Occurs close to creek lines in rainforest, Swamp Mahogany and, wet sclerophyll forest. Restricted to western parts of the City in riparian areas on fertile soils. All records are west of Cooranbong. Breeds in shallow flowing, sometimes rocky streams, riparian areas and shaded ponds close to creeks, usually under banks overhanging the water.

Photo: Stephen Mahony



Tufted Frog – *Adelotus brevis*

Regionally Significant

Occurs in gully rainforest, wet sclerophyll forest, wetlands, low flooded areas, permanent ponds, ground logs and litter, stones, crevices and slow flowing water. Distributed across the City with the majority of sightings in rainforest and wet sclerophyll forest.

Photo: Stephen Mahony

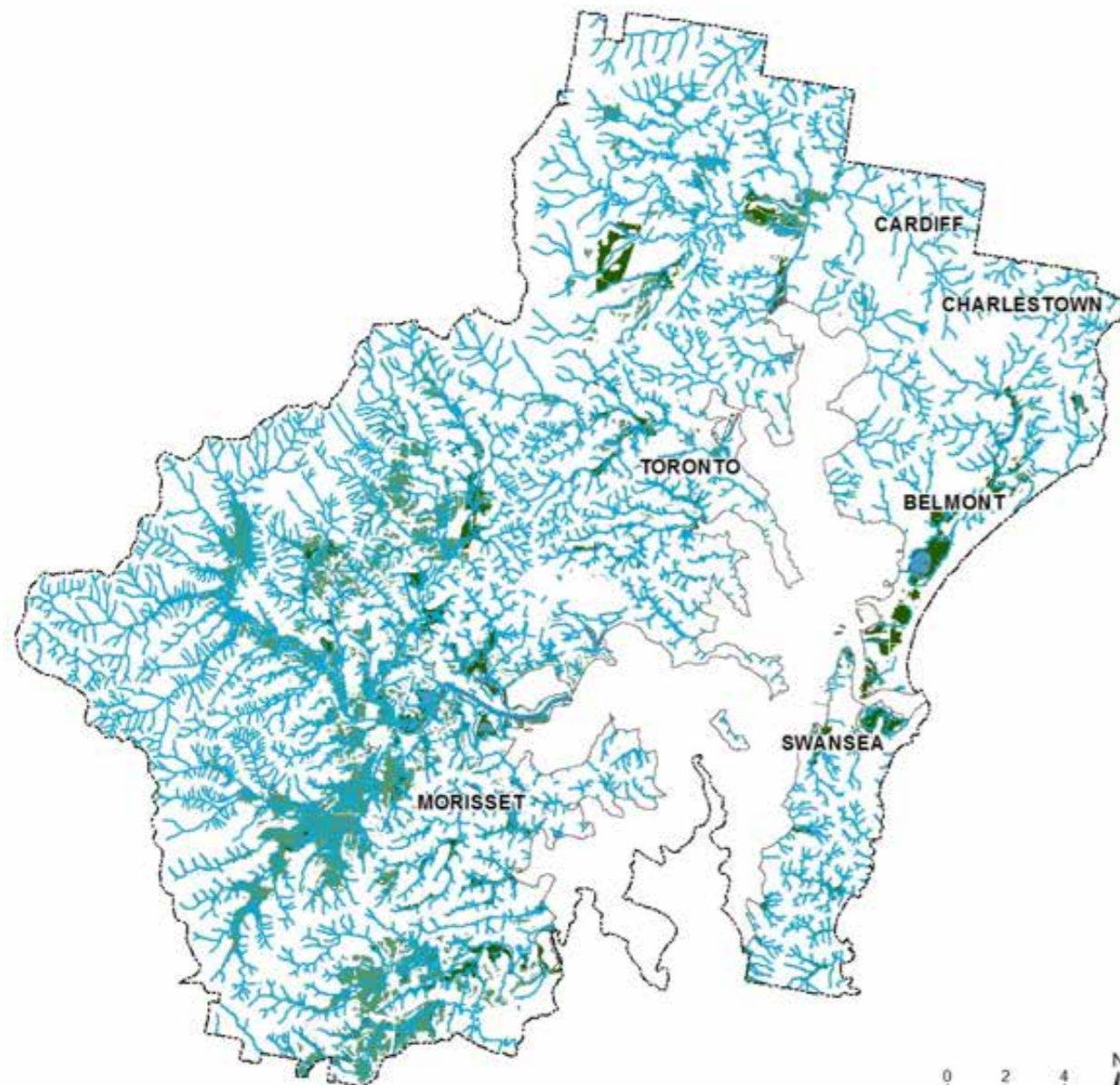


Great Barred Frog – *Mixophyes fasciolatus*

Regionally Significant

Occurs in gully rainforest, riparian areas and wet sclerophyll forest. Widespread in wet forests in the western areas of the City. Can be found on forest roads or near ponds and slow creeks where eggs are deposited after spring rain.

Photo: Stephen Mahony



Lake Macquarie Amphibian Habitat

- creek lines
- dams & open water
- wetland vegetation
- floodplain



Stony Creek (Lesueur's) Frog – *Litoria wilcoxii*
Regionally Significant

Habitat includes dams on floodplains near creeklines particularly in the Mandalong Valley as well as forested areas of the Watagans in the west of the City. Occurs in a range of habitats including wet and dry sclerophyll forests, coastal heath, and rainforest. This species is sometimes found far from water in leaf litter and on ridges. Favours pebbles and boulders in streams and lays eggs in streamside pools and backwaters.

Photo: Stephen Mahony



Stuttering / Barred River Frog - *Mixophyes balbus*
EPBC Act – Vulnerable, TSC Act - Endangered

Found in riparian areas, rainforest and wet sclerophyll forests of the Watagan foothills and escarpments, particularly in headwaters of creeks in the western parts of the City. Lives in deep leaf litter and thick understorey on the forest floor. Lays eggs in streams, rock pools and backwaters.

Photo: Stephen Mahony



Wallum Froglet - *Crinia tinnula*
TSC Act - Vulnerable

Usually associated with acidic swamps on coastal sand plains. Shows a preference for sedgeland, wet heath, and Paperbark swamps. Can occur in disturbed areas and in low nutrient sandy soils. Recorded in low lying coastal areas of the City as well as around Morisset and Wyee.

Photo: Stephen Mahony



Freycinet's Frog - *Litoria freycineti*
Conservation Concern

Found in shallow, ephemeral ponds, sandy clay quarries and sandstone outcrops. Breeds in reeds of swamps, creeks, streamside pools or sometimes in temporary puddles. Records are scattered across the City including Bonnells Bay, Belmont, Redhead, Hillsborough, Valentine, Eraring and Cameron Park.

Photo: Stephen Mahony



Green-thighed Frog - *Litoria brevipalmata*
TSC Act - Vulnerable

Occurs in range of habitats including rainforest, moist and dry Eucalypt forest and heath. Breeds in temporary pools and flooded areas usually dominated by Gahnia and Carex grasses and Melaleuca. Breeds with heavy rainfall from spring to autumn, both in the flooded areas of the valley and the mid-slopes in still water. Records in the City occur in the Martinsville Valley.

Photo: Stephen Mahony



Green and Golden Bell Frog - *Litoria aurea*
EPBC Act – Vulnerable, TSC Act – Endangered

Found in coastal freshwater and brackish wetlands, non-native tall emergent aquatic vegetation. Also inhabit disturbed areas such as open paddocks and ponds in quarries. This species has been recorded on a coastal rockshelf and in wetlands in the south west and the coastal strip of the City. It is now thought to favour brackish and slightly saline environments. Records occur at Redhead, Coonabong, Wyee and South Wallarah.

Photo: Stephen Mahony



Littlejohn's Tree Frog - *Litoria littlejohni*
EPBC and TSC Act - Vulnerable

Found in upland heath and native woodlands with heath on plateaus in the Watagans on the western boundary of the City. Breeding occurs in upper reaches of permanent streams and perched wetlands, possibly uses tree hollows in winter.

Photo: Stephen Mahony



Jervis Bay Tree Frog - *Litoria jervisiensis*
Regionally Significant

A coastal species found in streams, coastal heaths and swamplands, coastal swamp forests dominated by Melaleuca and Swamp Mahogany, native vegetation connections along floodplains and wetlands including large reed bed swamps. Also found in man-made ponds and wetlands adjacent to areas of native vegetation south-west of the Lake.

Photo: Stephen Mahony



Eastern Banjo Frog (Pobblebonk) - *Limnodynastes dumerilii*
Regionally Significant

Inhabits a wide variety of vegetation communities from forests and coastal heathlands to cleared pastures. Records in the City occur in rainforest but the majority of records are in dry forests and coastal heaths. Burrows into soft soil surface outside active periods. Moves a considerable distance from waterbodies where breeding occurs. Records occur in the dams west of the Lake.

Photo: Stephen Mahony



Fletcher's (Sandpaper) Frog - *Lechriodus fletcheri*
Regionally Significant

Found in humid wet forest with dense understorey usually above 200m or, at lower altitudes in gully rainforest, wet sclerophyll forest and riparian areas with good leaf litter. Requires still ephemeral water to breed including muddy water and potholes in forested areas. This species is a habitat specialist, occurring only in the wet forests of the Watagan Range.

Photo: Stephen Mahony